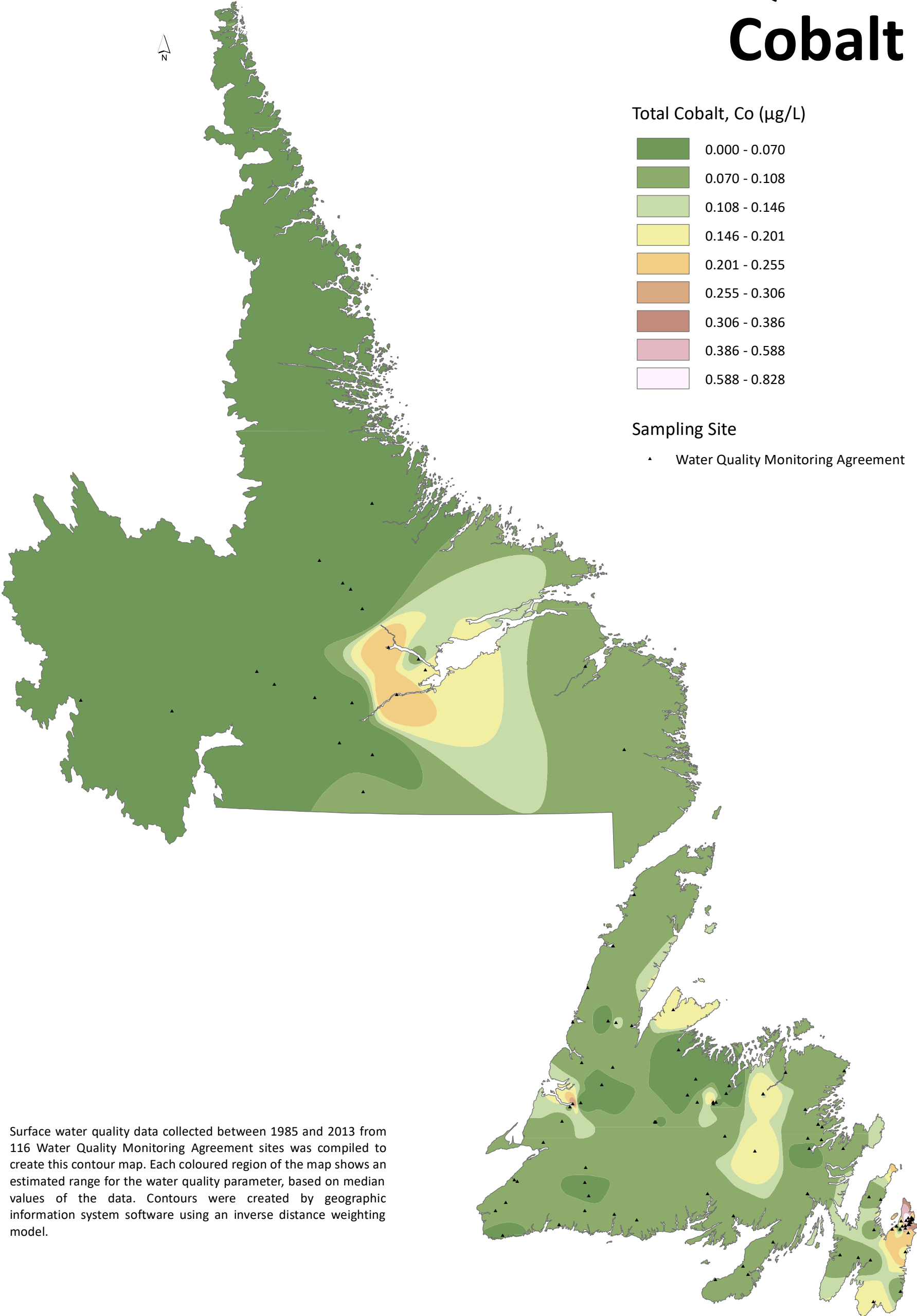


# WATER QUALITY Cobalt



Total Cobalt, Co (µg/L)

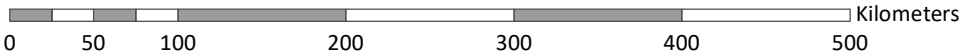
0.000 - 0.070
0.070 - 0.108
0.108 - 0.146
0.146 - 0.201
0.201 - 0.255
0.255 - 0.306
0.306 - 0.386
0.386 - 0.588
0.588 - 0.828

Sampling Site

▲ Water Quality Monitoring Agreement

Surface water quality data collected between 1985 and 2013 from 116 Water Quality Monitoring Agreement sites was compiled to create this contour map. Each coloured region of the map shows an estimated range for the water quality parameter, based on median values of the data. Contours were created by geographic information system software using an inverse distance weighting model.

Scale = 1:4,500,000



Government of Newfoundland and Labrador  
Environment, Climate Change, and Municipalities  
Water Resources Management Division



Environment and  
Climate Change  
Canada

Environnement et  
Changement climatique  
Canada