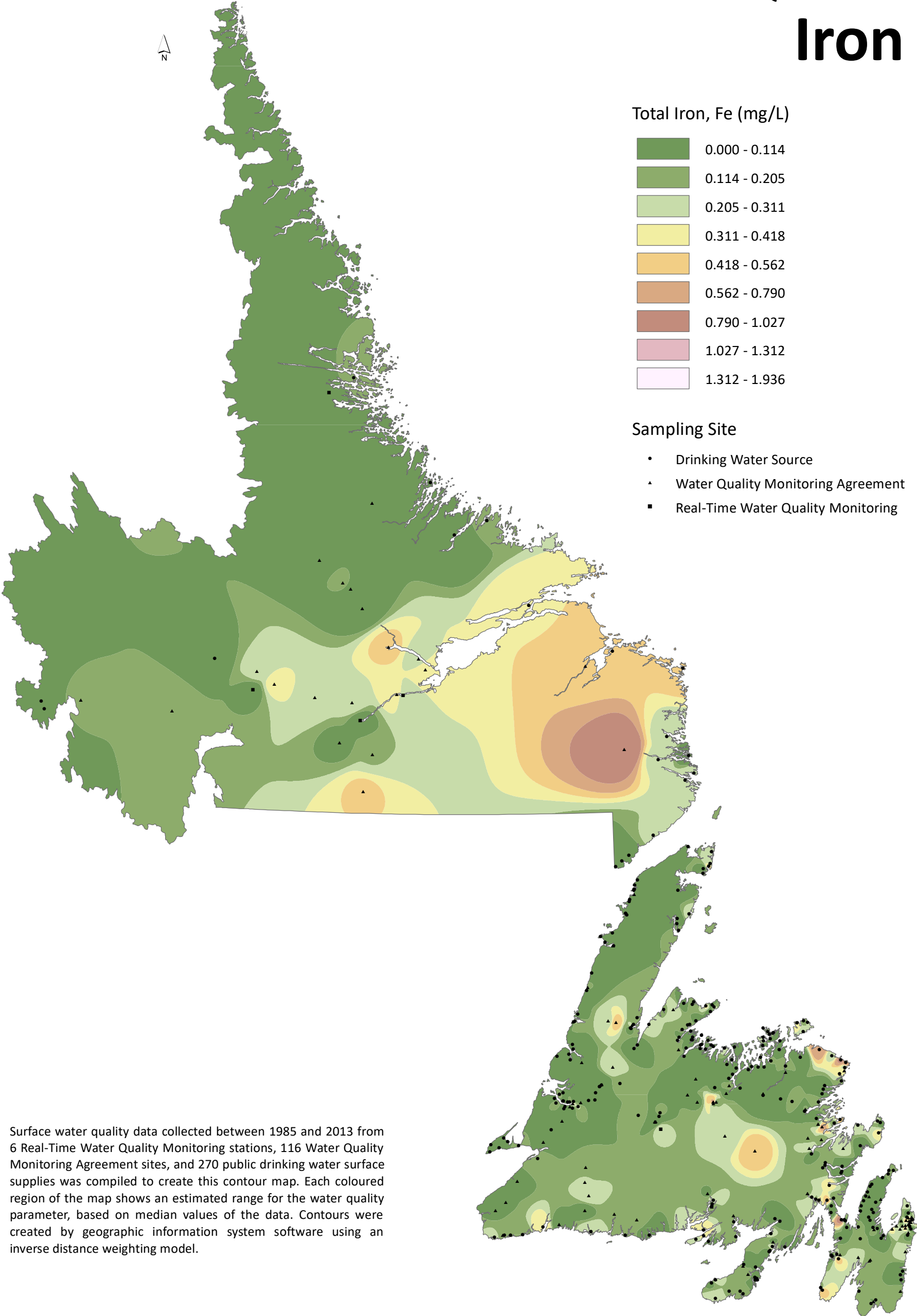


WATER QUALITY Iron



Total Iron, Fe (mg/L)

0.000 - 0.114
0.114 - 0.205
0.205 - 0.311
0.311 - 0.418
0.418 - 0.562
0.562 - 0.790
0.790 - 1.027
1.027 - 1.312
1.312 - 1.936

Sampling Site

- Drinking Water Source
- ▲ Water Quality Monitoring Agreement
- Real-Time Water Quality Monitoring

Surface water quality data collected between 1985 and 2013 from 6 Real-Time Water Quality Monitoring stations, 116 Water Quality Monitoring Agreement sites, and 270 public drinking water surface supplies was compiled to create this contour map. Each coloured region of the map shows an estimated range for the water quality parameter, based on median values of the data. Contours were created by geographic information system software using an inverse distance weighting model.

Scale = 1:4,500,000

