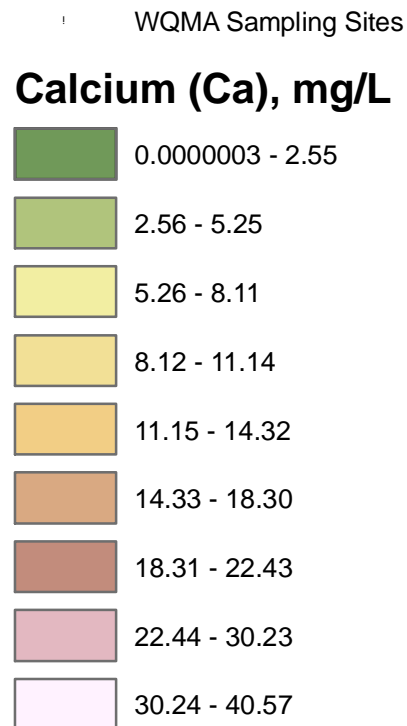
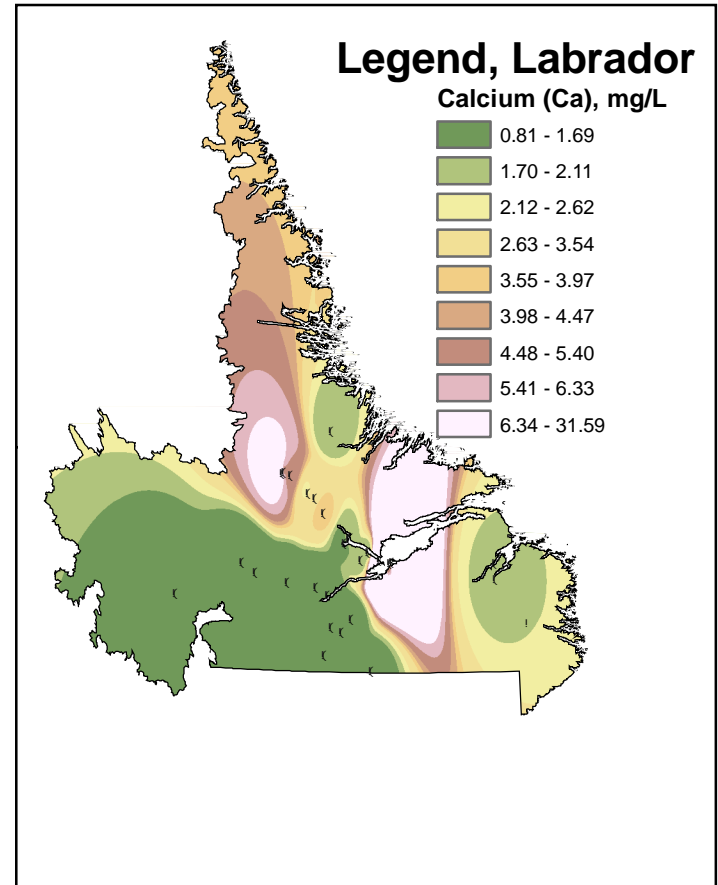
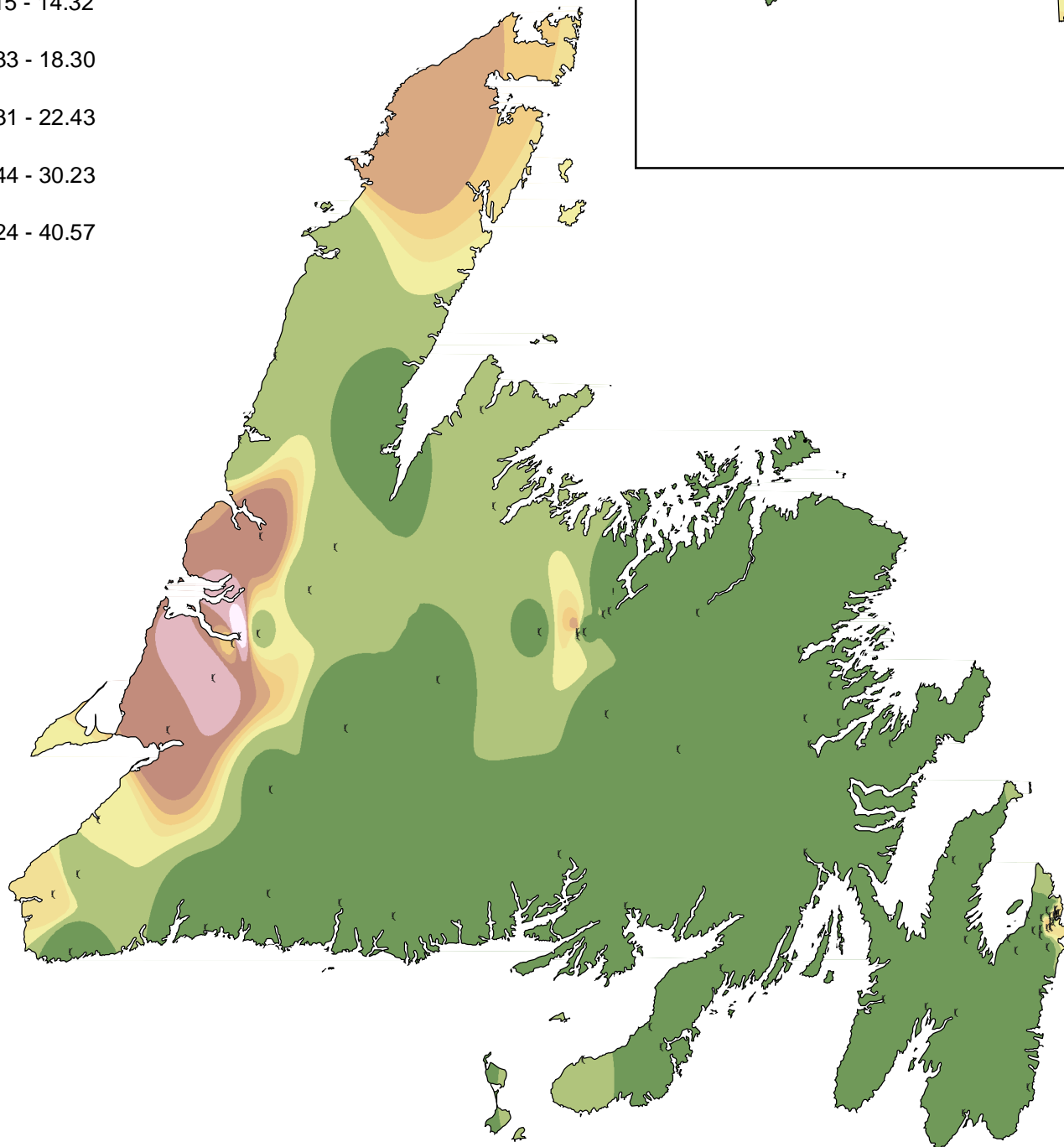
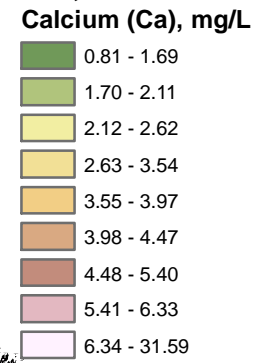


Calcium Contours Based on Canada-Newfoundland Water Quality Monitoring Agreement Data

Legend, Newfoundland



Legend, Labrador



A contour map displays regions, each of which represents a constant value for a particular parameter. These regions are approximations based on average recorded values at WQMA sites for all data collected between 1985-2000. The contour regions were estimated using a geostatistical approach known as Inverse Distance Weight (IDW), with a power of 5. The maps will be updated for every five years of new water quality data collected. Values are compared against the Canadian Council of Ministers of the Environment Water Quality Guidelines for the Protection of Aquatic Life.

Calcium is found naturally in certain types of rocks, as well as in landfill leachate and wastewater effluent. Burning of fossil fuels can contribute to calcium in water bodies. It is also found in road salts, and as such may be higher in urban areas or near highways. There is no calcium guideline for the Protection of Aquatic Life.