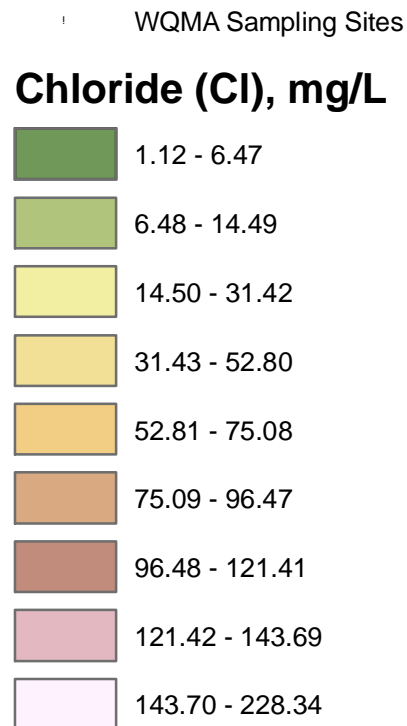
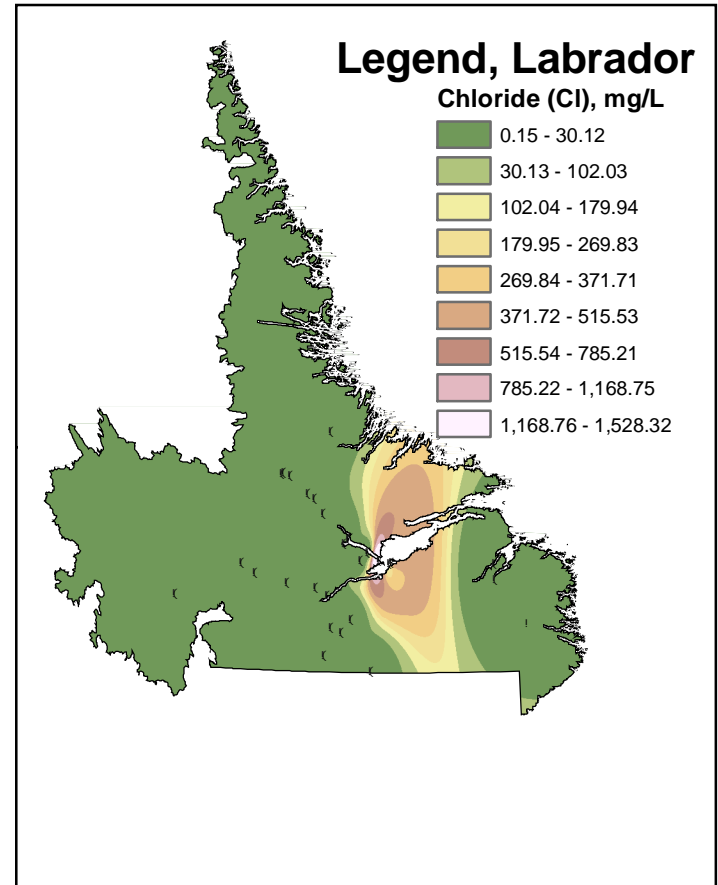
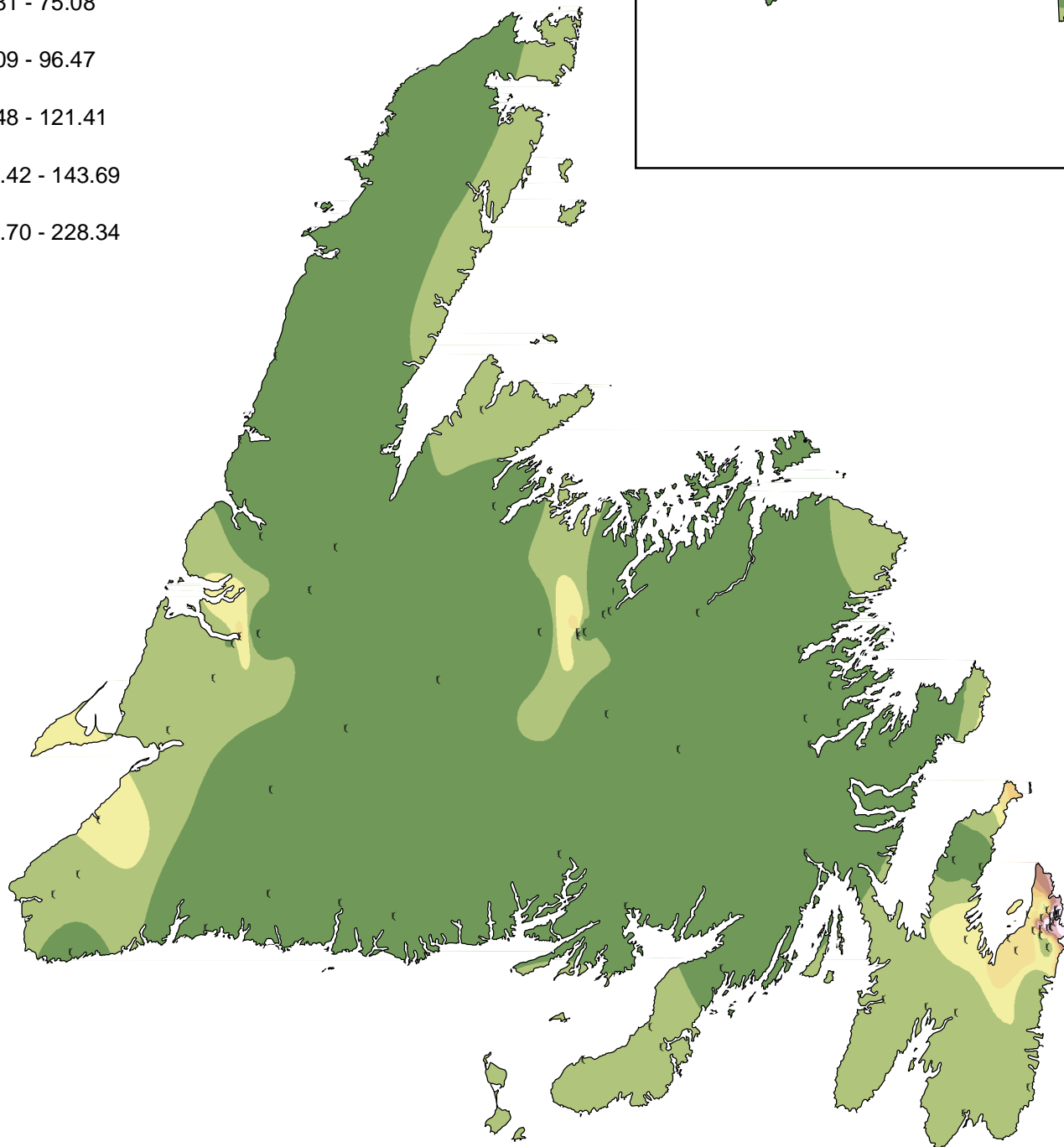
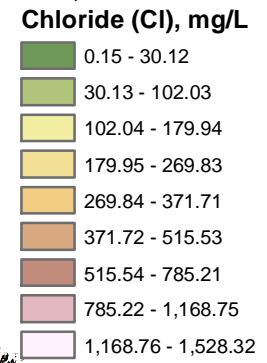


Chloride Contours Based on Canada-Newfoundland Water Quality Monitoring Agreement Data

Legend, Newfoundland



Legend, Labrador



A contour map displays regions, each of which represents a constant value for a particular parameter. These regions are approximations based on average recorded values at WQMA sites for all data collected between 1985-2000. The contour regions were estimated using a geostatistical approach known as Inverse Distance Weight (IDW), with a power of 5. The maps will be updated for every five years of new water quality data collected. Values are compared against the Canadian Council of Ministers of the Environment Water Quality Guidelines for the Protection of Aquatic Life.

Chloride is found in road-salt, and as such, levels tend to be higher in areas with major roads, and in urban areas. It is also found in pulp and paper industry wastes, and sewage runoff. There is no chloride guideline for the Protection of Aquatic Life.