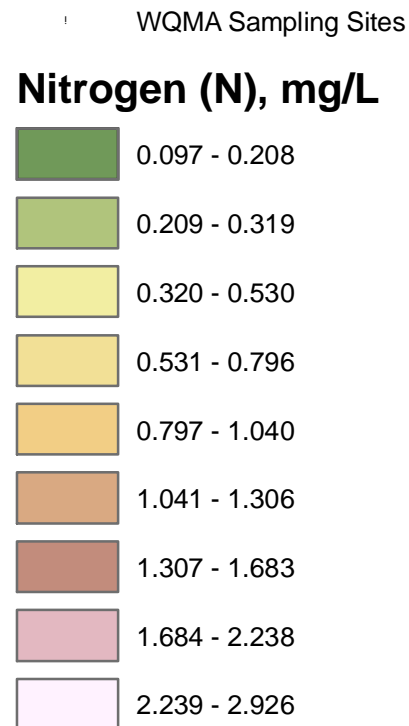
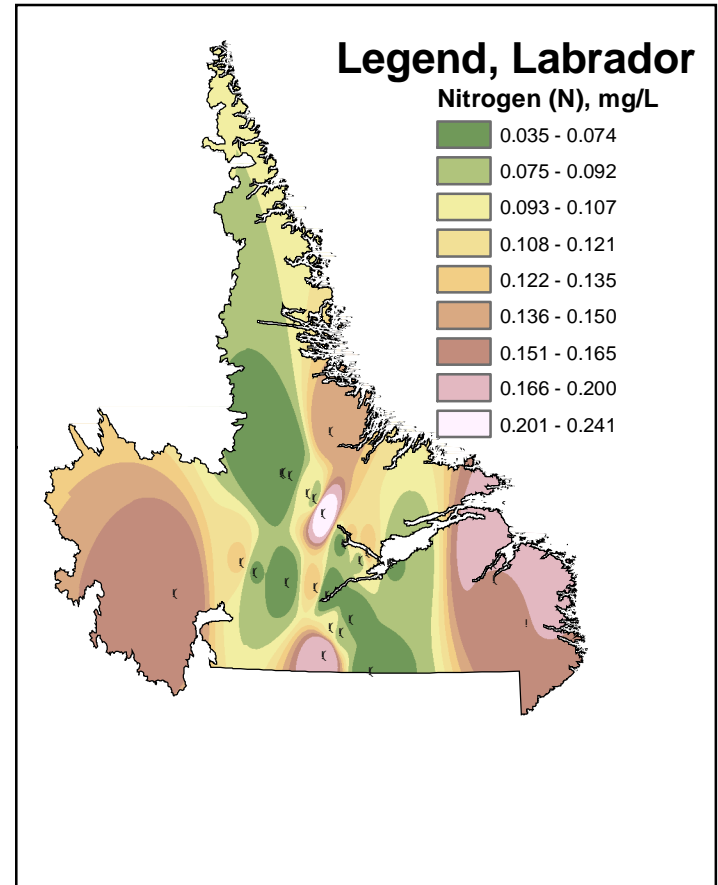
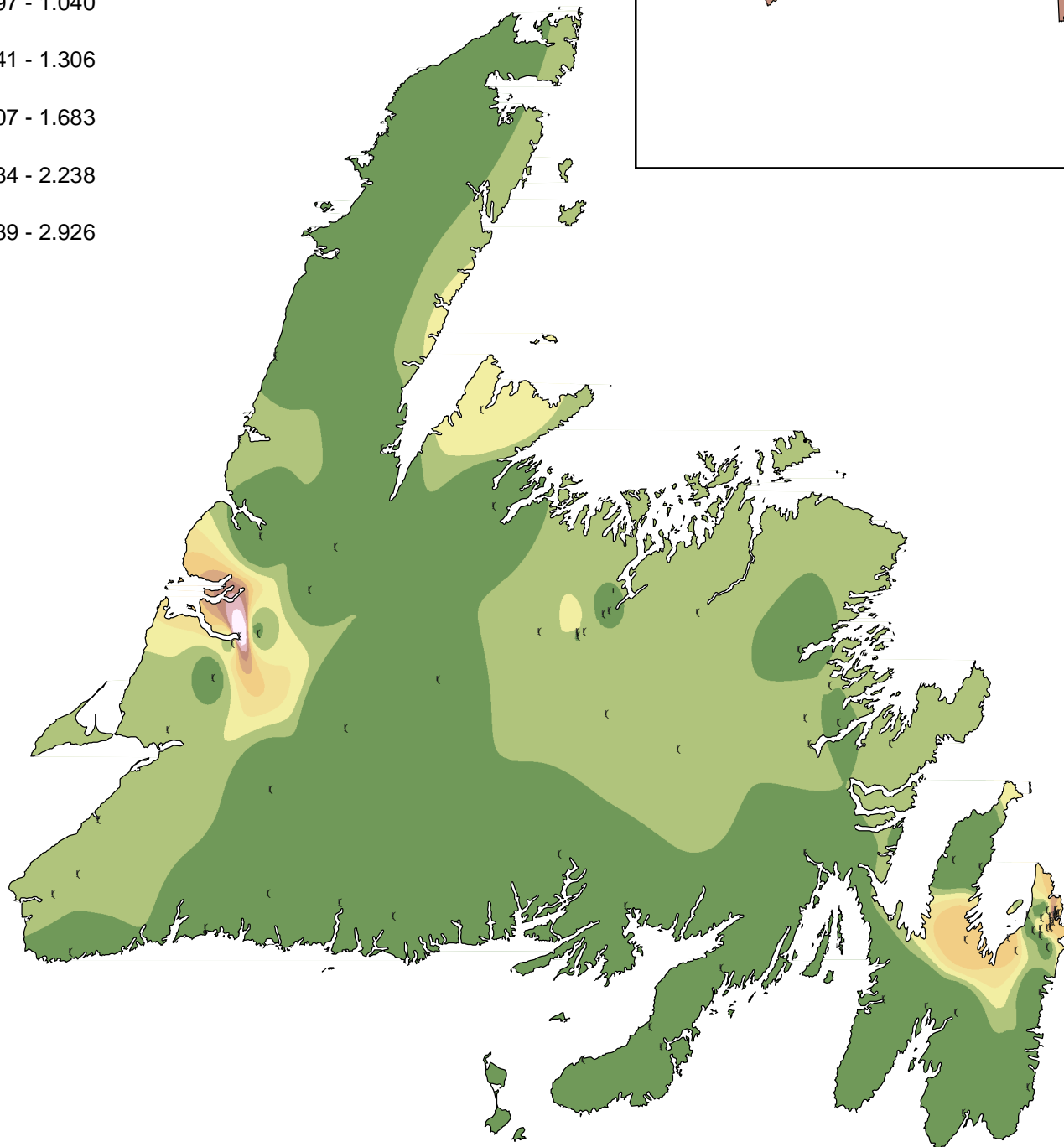
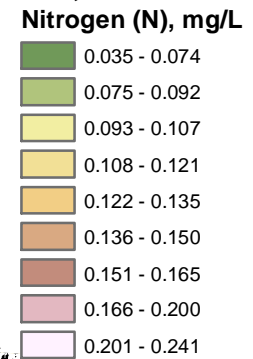


Nitrogen Contours Based on Canada-Newfoundland Water Quality Monitoring Agreement Data

Legend, Newfoundland



Legend, Labrador



A contour map displays regions, each of which represents a constant value for a particular parameter. These regions are approximations based on average recorded values at WQMA sites for all data collected between 1985-2000. The contour regions were estimated using a geostatistical approach known as Inverse Distance Weight (IDW), with a power of 5. The maps will be updated for every five years of new water quality data collected. Values are compared against the Canadian Council of Ministers of the Environment Water Quality Guidelines for the Protection of Aquatic Life.

Nitrogen levels can be affected by septic tank leakage, and are increased in areas that use fertilizers (i.e. agriculture). Activities such as forestry can also affect nitrogen levels. The nitrogen guideline for the Protection of Aquatic Life is 13 mg/L. Levels in the province are well under this guideline value.