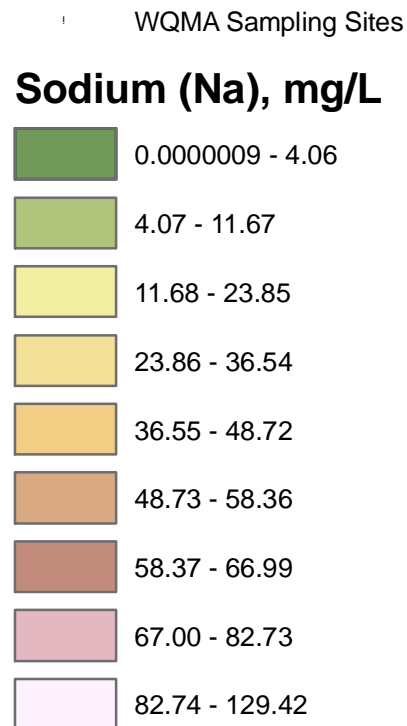
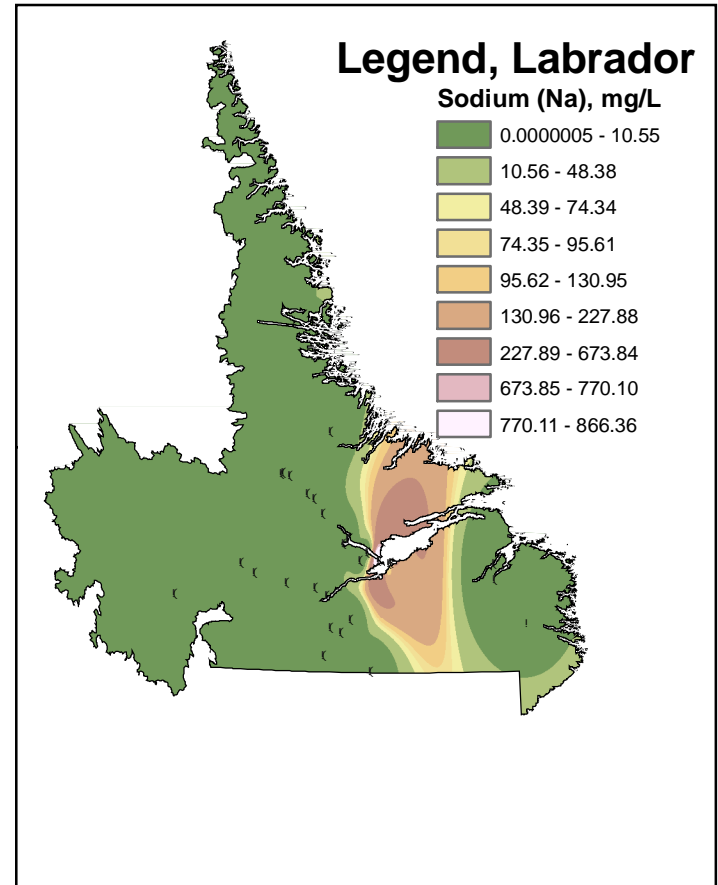
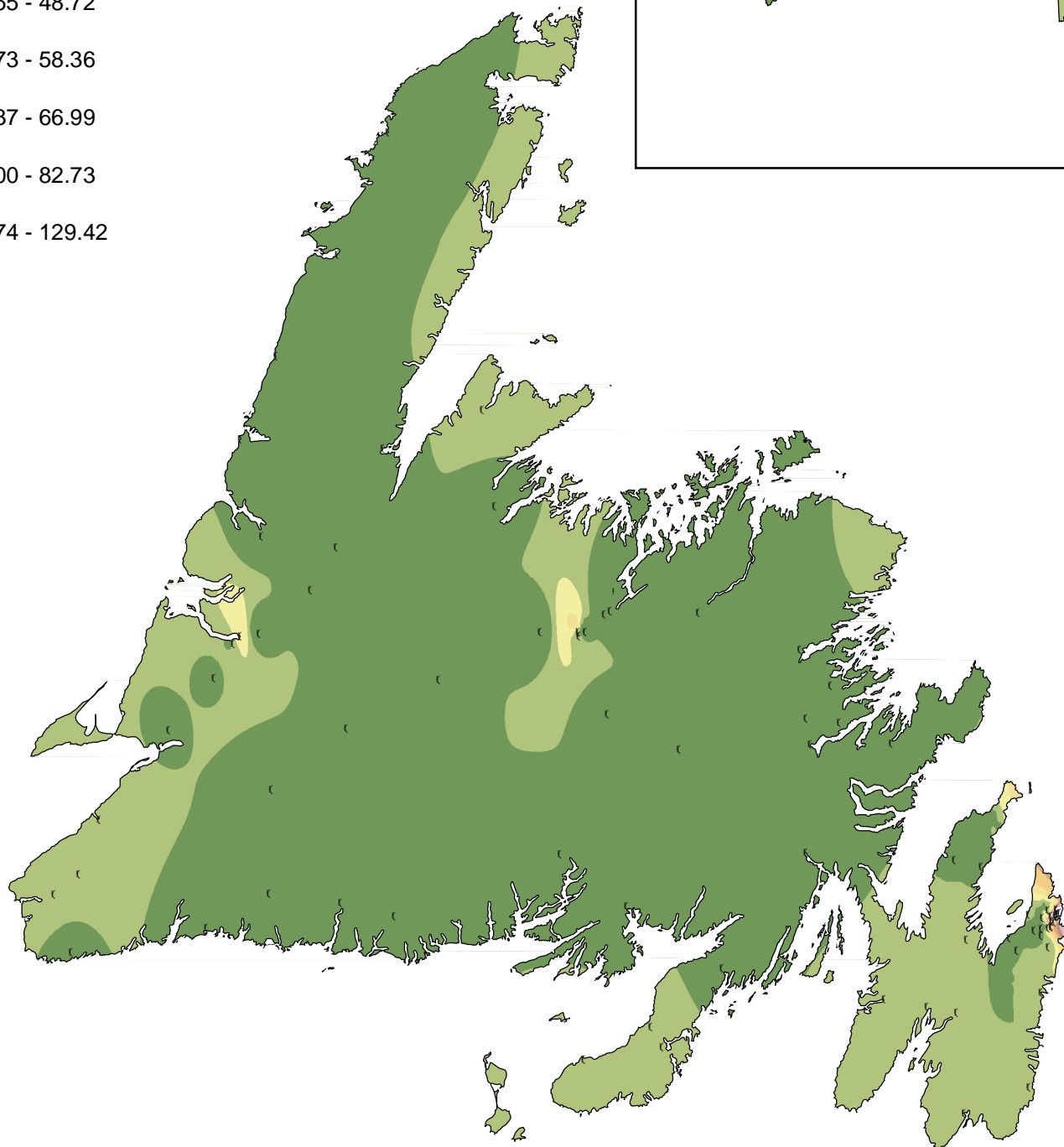
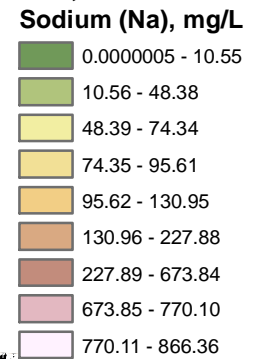


Sodium Contours Based on Canada-Newfoundland Water Quality Monitoring Agreement Data

Legend, Newfoundland



Legend, Labrador



A contour map displays regions, each of which represents a constant value for a particular parameter. These regions are approximations based on average recorded values at WQMA sites for all data collected between 1985-2000. The contour regions were estimated using a geostatistical approach known as Inverse Distance Weight (IDW), with a power of 5. The maps will be updated for every five years of new water quality data collected. Values are compared against the Canadian Council of Ministers of the Environment Water Quality Guidelines for the Protection of Aquatic Life.

Sodium (salt) is generally higher in urban areas where roads are salted extensively in winter. It is also a product of weathering of natural salt deposits (geology). There is no sodium guideline for the Protection of Aquatic Life.