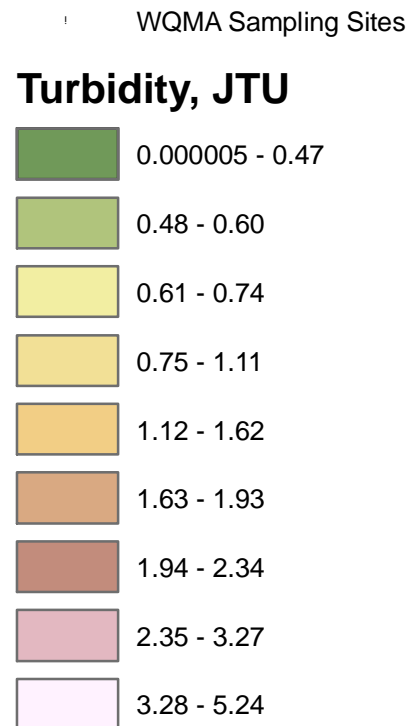
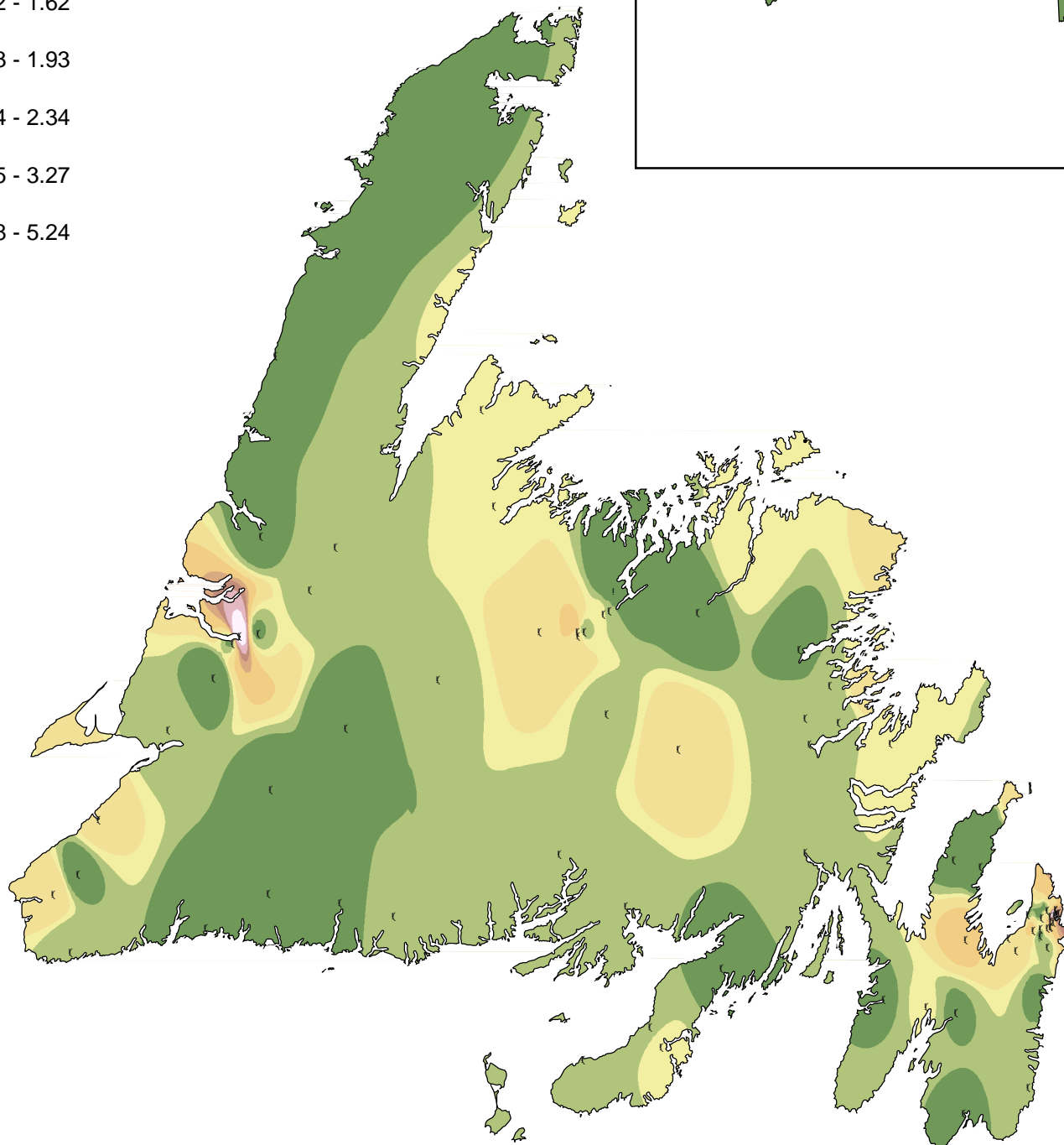
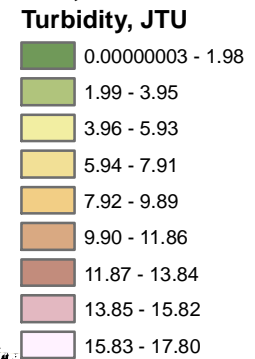


Turbidity Contours Based on Canada-Newfoundland Water Quality Monitoring Agreement Data

Legend, Newfoundland



Legend, Labrador



A contour map displays regions, each of which represents a constant value for a particular parameter. These regions are approximations based on average recorded values at WQMA sites for all data collected between 1985-2000. The contour regions were estimated using a geostatistical approach known as Inverse Distance Weight (IDW), with a power of 5. The maps will be updated for every five years of new water quality data collected. Values are compared against the Canadian Council of Ministers of the Environment Water Quality Guidelines for the Protection of Aquatic Life.

Turbidity is a cloudiness or haziness of water caused by individual particles that are too small to be seen without magnification. This suspended solid matter is very small and will settle very slowly, or not at all, if the sample is regularly agitated or the particles are colloidal. Turbidity is increased in urban areas, as well as in areas that have activities that increase the amount of particles in water, such as forestry or agricultural activity. There is no turbidity guideline for the Protection of Aquatic Life.