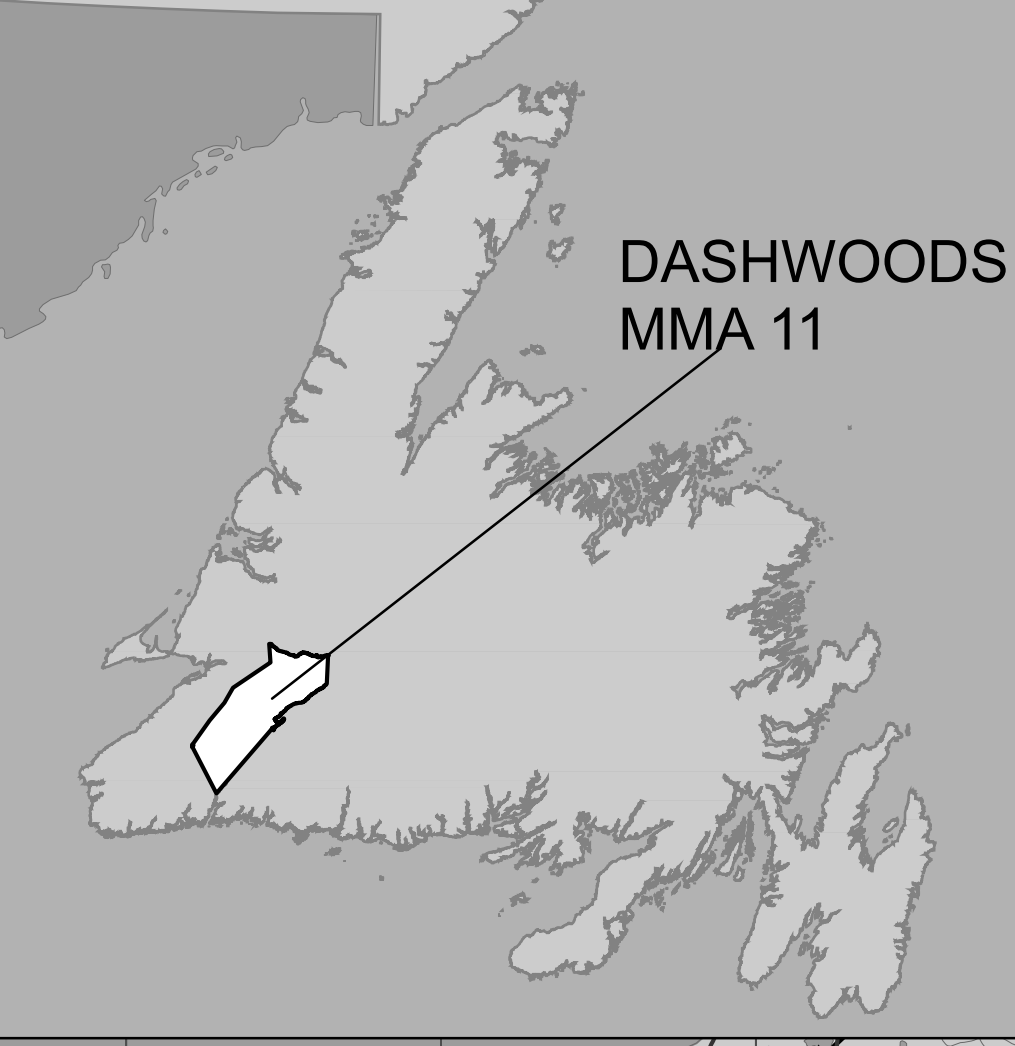
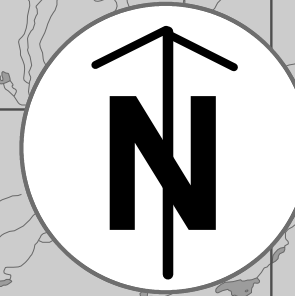


Dashwoods Newfoundland Moose Management Area 11



DASHWOODS
MMA 11

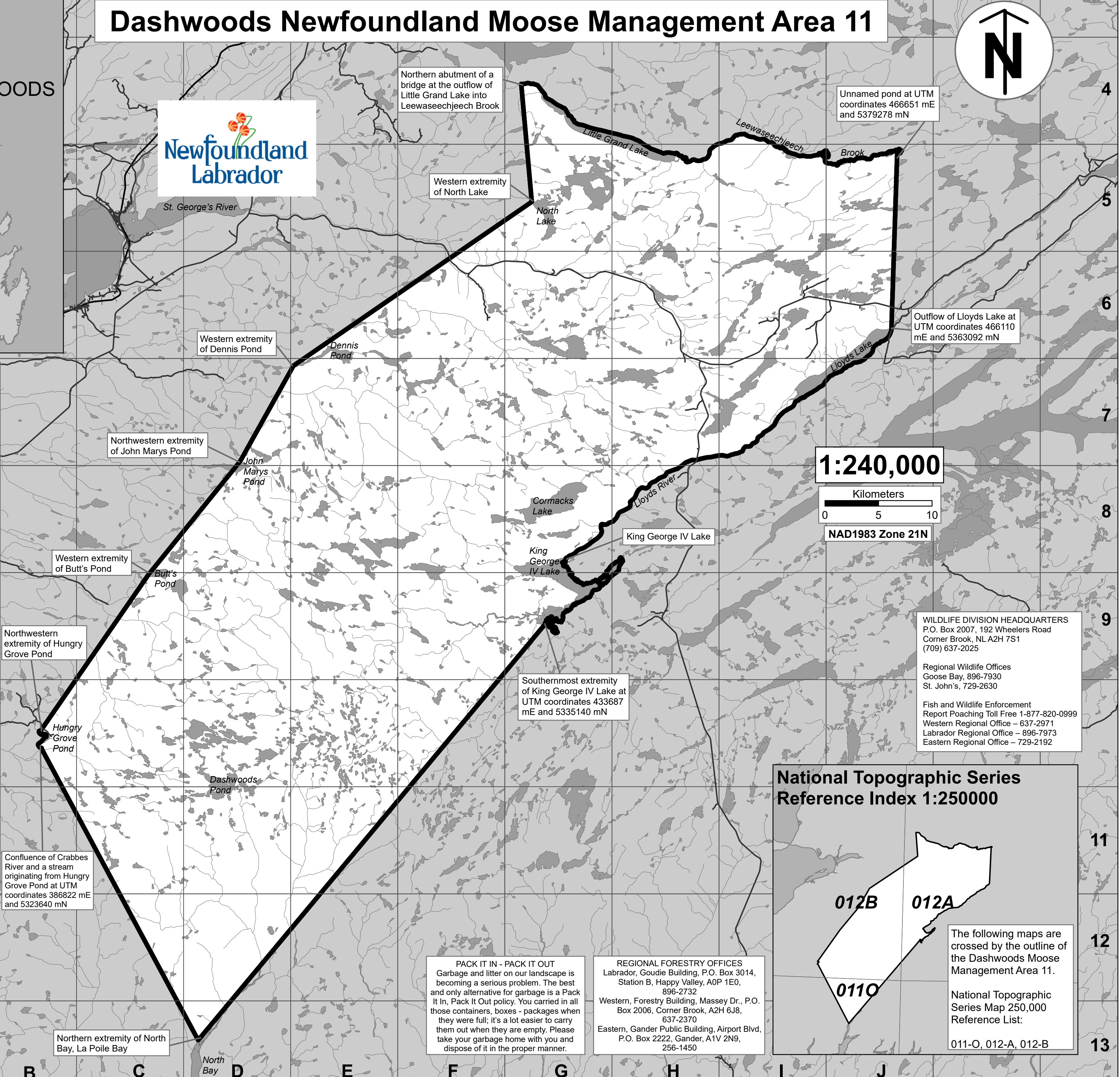


MOOSE MANAGEMENT AREA 11 DASHWOODS

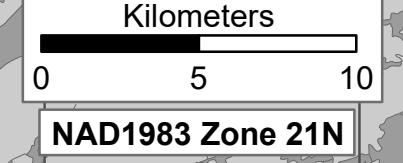
All that area of the Island of Newfoundland bounded by a line beginning at the northern extremity of North Bay, La Poile Bay; then following a straight line in a northwesterly direction to the confluence of Crabbes River with a stream originating from Hungry Grove Pond at UTM coordinates 386822 metres east and 5323640 metres north; then following the western bank of said stream and the western shoreline of Hungry Grove Pond in a generally northerly direction to its northwestern extremity; then following a straight line in a northeasterly direction to the western extremity of Butt's Pond; then following a straight line in a northeasterly direction to the western extremity of Dennis Pond; then following a straight line in a northeasterly direction to the western extremity of North Lake; then following a straight line in a generally northerly direction to the northern abutment of a bridge at the outflow of Little Grand Lake into Leewaseechjeech Brook; then following the northern shoreline of Little Grand Lake and the northern banks of the eastern tributaries of Leewaseechjeech Brook in a generally southeasterly direction to an unnamed pond at UTM coordinates 464325 metres east and 5379136 metres north; then following the northeastern shoreline of said pond in a generally easterly direction to a brook on its southeastern shoreline at UTM coordinates 466651 metres east and 5379278 metres north; then following a straight line in a generally southerly direction to the southern shoreline of Lloyds Lake to its outflow at UTM coordinates 466110 metres east and 5363092 metres north; then following the southern shoreline of Lloyds Lake and the southern bank of Lloyds River in a generally southwesterly direction to King George IV Lake; then following the eastern shoreline of King George IV Lake to its southernmost extremity at UTM coordinates 433687 metres east and 5335140 metres north; then following a straight line in a southwesterly direction to the point of commencement.

Note: This map has been prepared as a convenient reference only. It is not a legal document. The Wildlife Act and Regulations and the Annual Hunting Orders published therein should be consulted for all purposes of interpreting and applying the law. Contact the Newfoundland & Labrador Wildlife Division.

Created by: Wildlife Division
Department of Fisheries, Forestry & Agriculture
Date: October 2020



1:240,000



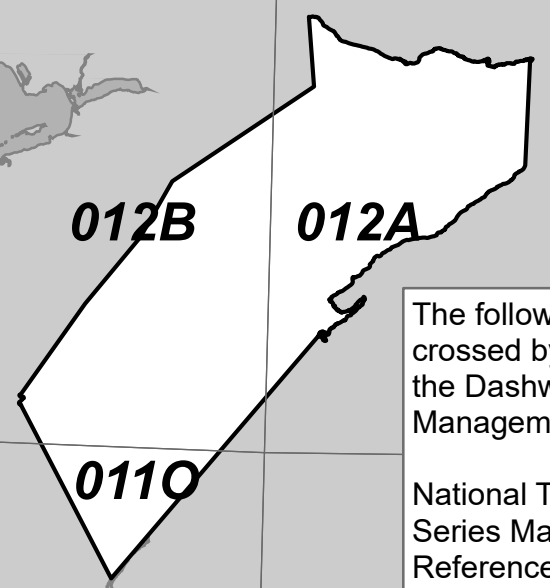
NAD1983 Zone 21N

WILDLIFE DIVISION HEADQUARTERS
P.O. Box 2007, 192 Wheelers Road
Corner Brook, NL A2H 7S1
(709) 637-2025

Regional Wildlife Offices
Goose Bay, 896-7930
St. John's, 729-2630

Fish and Wildlife Enforcement
Report Poaching Toll Free 1-877-820-0999
Western Regional Office – 637-2971
Labrador Regional Office – 896-7973
Eastern Regional Office – 729-2192

National Topographic Series Reference Index 1:250000



The following maps are
crossed by the outline of
the Dashwoods Moose
Management Area 11.

National Topographic
Series Map 250,000
Reference List:

011-O, 012-A, 012-B

PACK IT IN - PACK IT OUT
Garbage and litter on our landscape is becoming a serious problem. The best and only alternative for garbage is a Pack It In, Pack It Out policy. You carried in all those containers, boxes - packages when they were full; it's a lot easier to carry them out when they are empty. Please take your garbage home with you and dispose of it in the proper manner.

REGIONAL FORESTRY OFFICES
Labrador, Goudie Building, P.O. Box 3014,
Station B, Happy Valley, A0P 1E0,
896-2732
Western, Forestry Building, Massey Dr., P.O.
Box 2006, Corner Brook, A2H 6J8,
637-2370
Eastern, Gander Public Building, Airport Blvd,
P.O. Box 2222, Gander, A1V 2N9,
256-1450

Northern extremity of North
Bay, La Poile Bay

Southernmost extremity
of King George IV Lake at
UTM coordinates 433687
mE and 5335140 mN

Confluence of Crabbes
River and a stream
originating from Hungry
Grove Pond at UTM
coordinates 386822 mE
and 5323640 mN

Outflow of Lloyds Lake at
UTM coordinates 466110
mE and 5363092 mN

Unnamed pond at UTM
coordinates 466651 mE
and 5379278 mN

Northern abutment of a
bridge at the outflow of
Little Grand Lake into
Leewaseechjeech Brook

Western extremity
of North Lake

Western extremity
of Dennis Pond

Northwestern extremity
of John Marys Pond

Western extremity
of Butt's Pond

Northwestern
extremity of Hungry
Grove Pond