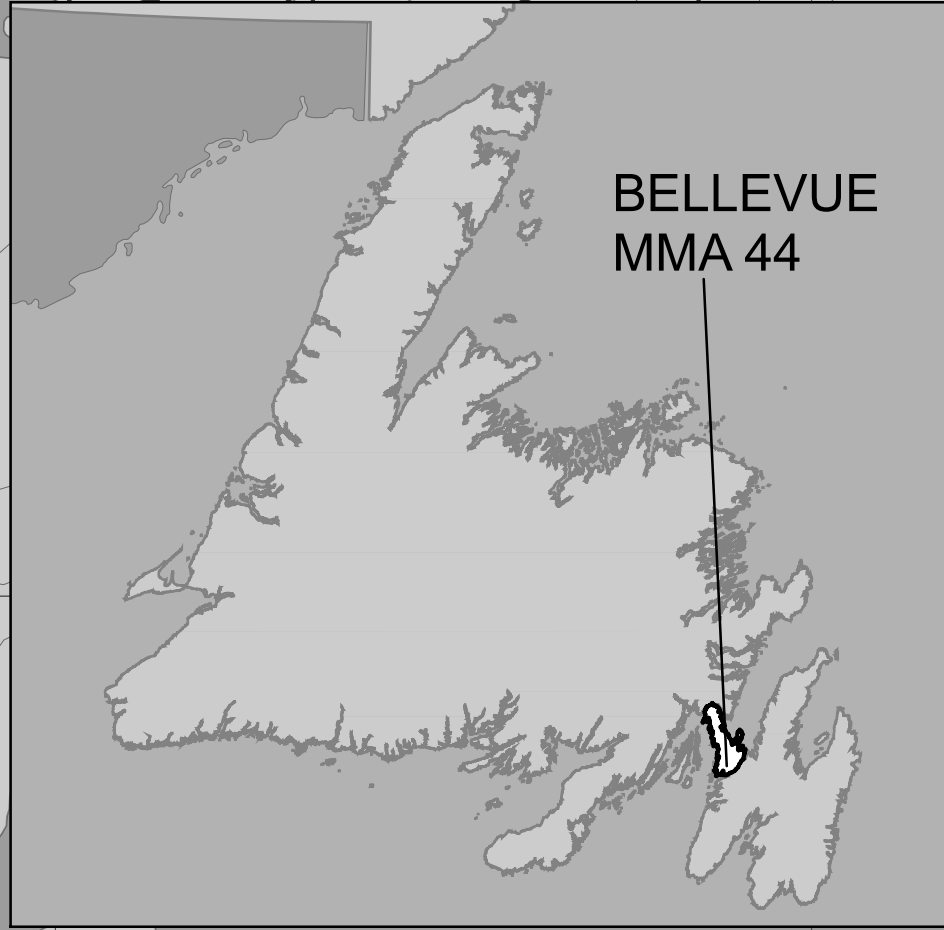


Bellevue Newfoundland Moose Management Area 44



BELLEVUE
MMA 44

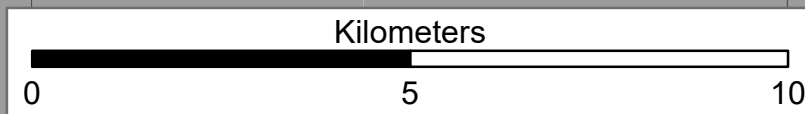
MOOSE MANAGEMENT AREA 44 BELLEVUE

All that area of the Island of Newfoundland bounded by a line beginning at the high water mark of Come By Chance Bay with a brook located at UTM coordinates 276560 metres east and 5303593 metres north; then following the southwestern bank of this brook in a southeasterly direction to its intersection with the main Come by Chance Highway; then following said highway in a northeasterly direction to its intersection with the Trans Canada Highway, TCH, Route 1; then crossing the TCH in an easterly direction to Sunnyside Road; then following said road in a northeasterly direction to its intersection with the western bank of Northern Brook; then following said brook in a southeasterly direction to its confluence with the coastline of Bull Arm; then following the coastline of Bull Arm and the coastline of Trinity Bay in a generally southwesterly direction to Chapel Arm; then following the coastline of Chapel Arm in a south by southwesterly direction to Western Cove Brook; then following the western bank of said brook in a southwesterly direction to its intersection with Chapel Arm Road; then following said road in a southwesterly direction to its intersection with the Trans Canada Highway, TCH, Route 1; then crossing the TCH in a southwesterly direction to Long Harbour Road; then following said road in a southwesterly direction to its intersection with a road at UTM coordinates 290215 metres east and 5257814 metres north; then following said road in a northwesterly direction to its intersection with Bottom Brook; then following the northern bank of Bottom Brook in a southwesterly direction to its confluence with Long Harbour; then following the northern shoreline of Long Harbour in a generally westerly direction to St. Croix Point; then following the coastline of insular Newfoundland in a generally northerly direction to the point of commencement; excluding all offshore islands.

Note: This map has been prepared as a convenient reference only. It is not a legal document. The Wildlife Act and Regulations and the Annual Hunting Orders published therein should be consulted for all purposes of interpreting and applying the law. Contact the Newfoundland & Labrador Wildlife Division.

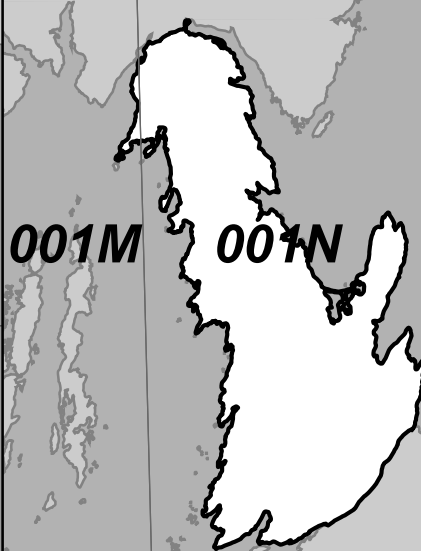
Created by: Wildlife Division
Department of Fisheries, Forestry & Agriculture
Date: November 2020

1:100,000



NAD1983 Zone 22N

National Topographic Series Reference Index 1:250000



The following maps are crossed by the outline of the Bellevue Moose Management Area 44.

National Topographic Series Map 250,000 Reference List:

001-M, 001-N

PACK IT IN - PACK IT OUT
Garbage and litter on our landscape is becoming a serious problem. The best and only alternative for garbage is a Pack It In, Pack It Out policy. You carried in all those containers, boxes - packages when they were full; it's a lot easier to carry them out when they are empty. Please take your garbage home with you and dispose of it in the proper manner.

REGIONAL FORESTRY OFFICES
Labrador, Goudie Building, P.O. Box 3014, Station B, Happy Valley, A0P 1E0, 896-2732
Western, Forestry Building, Massey Dr., P.O. Box 2006, Corner Brook, A2H 6J8, 637-2370
Eastern, Gander Public Building, Airport Blvd, P.O. Box 2222, Gander, A1V 2N9, 256-1450



WILDLIFE DIVISION HEADQUARTERS
P.O. Box 2007, 192 Wheelers Road
Corner Brook, NL A2H 7S1
(709) 637-2025

Regional Wildlife Offices
Goose Bay, 896-7930
St. John's, 729-2630

Fish and Wildlife Enforcement
Report Poaching Toll Free 1-877-820-0999
Western Regional Office - 637-2971
Labrador Regional Office - 896-7973
Eastern Regional Office - 729-2192



PLACENTIA BAY

TRINITY BAY

Bellevue

TRANS CANADA HIGHWAY
ROUTE 201

ROUTE 202

ROUTE 202

Western Cove Brook

Intersection of Western Cove Brook and Chapel Arm Road

Intersection of Chapel Arm Road and Long Harbour Road

Intersection of Long Harbour Road and an unnamed road at UTM coordinates 290215 mE and 5257814 mN

Intersection of Bottom Brook and an unnamed road

Confluence of Bottom Brook with Long Harbour

St. Croix Point

B

C

D

E