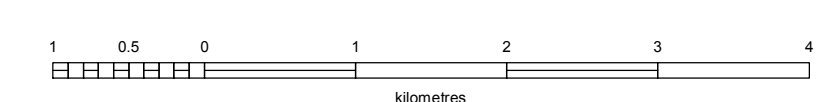


MAP 2014-17
POINT LEAMINGTON
NEWFOUNDLAND AND LABRADOR



LEGEND

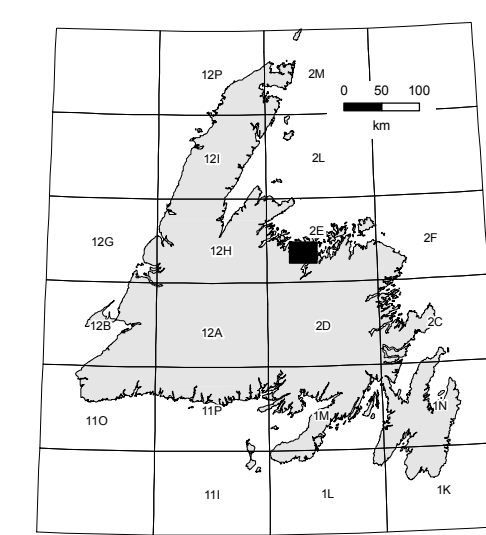
- Where three different landforms are included in a single map unit they are each separated by a single slash (/) and their relative percentages are (60-80), (15-35), and (5-15).
- Where two landforms are included in a single map unit, a double slash (//) or single slash (/) is used to separate them, and their relative percentages are (65-95)/(5-15) for double slash, or (60-85)/(15-40) for a single slash.
- A hyphen between two landform types indicates that they are approximately equal in area. For example, Tv/Rc indicates that till veneer and rock concealed by vegetation or a thin regolith are equal in area.
- A composite symbol is used to show combinations of the above cases. For example, T indicates that about 60-85 percent of the area is covered by fluvial sediment, 15-40 percent by glaciofluvial sediments, and is underlain by till.

GENETIC CLASSIFICATION

Symbol	Depositional Environments	Origin and Characteristics of Materials
O	Bog	Floory drained accumulations of peat, peat moss and other organic matter; developed in areas of poor drainage
F	Fluvial	Alluvium consisting of silt and clay to bouldery gravel; forms terraces and plains associated with modern stream channels; near floodplains and deltas; usually less than 1 m thick; deposited by fluvial action at or below maximum flood levels
C	Colluvial	Coarse-grained bedrock-derived materials; may include sand, silt or clay; accumulates on the lower parts, or at the base of steep rock faces; transported by gravity
E	Aeolian	Medium- to fine-grained sand and silt, well sorted, poorly compacted; commonly forms as dunes up to 10 m high; transported and deposited by wind
G	Glaciofluvial	Fine-grained sand to coarse-grained cobbly gravel; forms plains, ridges (eskers), hummocks, terraces and deltas; generally greater than 1 m thick; deposited as outwash in an ice-contact or proglacial position
L	Lacustrine	Silt, clay, gravel and sand; forms as plains and blankets; silt and clay is deposited in freshwater lakes from suspension, sand and silt by lake-floor currents, gravel and sand by shoreline wave action
M	Marine	Clay, silt, gravel and diamicton; sand is present in some places, generally moderately to well sorted and commonly stratified, but may be massive; forms beach ridges, deltas, terraces and bars deposited in a marine environment; gravel and sand are formed by shoreline wave action; may include shells, clay and silt deposited from suspension and turbidity currents; gravel is generally a wave-washed lag
Tv, Td, Te, Tp, T, Td, Tl, Tr, Th, Tk	Glacial	Includes all types of till; composed of diamicton; transported and subsequently deposited by/for from glacial ice with no significant sorting by water. These include relatively thin (Tv) or thick (Td, Te, Tp, T, Td, Tl, Tr) till with little or no surface expression; features produced by actively flowing ice (Tl, Tl, T) or sediment deposited through ice disintegration (Th, Tk)
R, Rc	Rock	Bedrock, either exposed (R) or concealed by vegetation (Rc)

MORPHOLOGY

Symbol	Morphology	Description
a	apron	A relatively gentle slope at the foot of a steeper slope, commonly used to describe colluvium at the base of a rock escarpment; consists of materials derived from the usually steeper upper slope
b	blanket	Any deposit greater than 1.5 m thick; minor irregularities of the underlying unit are masked but the major topographic form is still evident
c	concealed by vegetation	Vegetation mat developed on either colluvial surfaces or a thin layer of angular frost-shattered and frost-heaved rock fragments overlying bedrock; includes areas of shallow ice (Tl, Tl, T) or discontinuous overburden
d	drumlinoid	Elongate ridges between 1.5 and 20 m high, 20 and 300 m wide, and 200 to 5000 m long; ridges have a rounded end pointing in the up-ice direction and gently curving side that tapers in the down-ice direction; exhibit a convex longitudinal profile, commonly with a steeper slope in the up-ice direction; consist of subglacially formed deposits shaped in a streamlined form parallel to the direction of glacial flow, commonly consist of till, although some may contain stratified drift; may have a rock core
e	eroded and dissected	A series of closely spaced gullies or deeply incised channels; can have a dendritic pattern or may be a single straight or arcuate channel; gullies and channels may contain underdrift streams
f	fan	A gently sloping accumulation of debris deposited by a stream issuing from a valley onto a lowland; has its apex at the mouth of the valley from which the stream issues; the fan shape results from the deposition of material as the stream swings back and forth across the lowland; fluvial fans are usually derived from eroded glacial and glaciofluvial deposits; glaciofluvial fans (deltas) are deposited in standing water rather than in a terrestrial environment; colluvial fans are derived from bedrock and are usually steeper (i.e., cone shaped)
h	hummock	An apparently random assemblage of knobs, mounds, ridges and depressions without any pronounced parallelism, significant form or orientation; formed by glacial melting during ice stagnation and disintegration; includes subglacial, englacial, supraglacial and stratified materials
k	kettle	A basin or bowl-shaped closed depression or hollow in glacial drift; results from the melting of a buried or partly buried detached block or lens of glacier ice; commonly occurs in association with hummocks
l	lineated	Elongate spindle-shaped ridges between 6 and 60 m high, 75 and 300 m wide and up to 4000 m long; ridges are commonly straight sided, taper at one or both ends, and have a flat longitudinal profile; consist of subglacially formed deposits shaped in a streamlined form parallel to the direction of ice flow; commonly consist of till, although some may contain stratified drift; may have a rock core; includes slope lineated bogs (O)
p	plain	A comparatively flat, level, or slightly undulating tract of land; materials are either till, glaciofluvial, alluvial, marine, lacustrine or organic sediments; bedrock features are commonly masked by the overlying sediments
r	ridge	Narrow, elongated and commonly steep-sided feature that rises above the surrounding terrain; materials are either rock, till, glaciofluvial, fluvial, marine, lacustrine, aeolian, or organic sediments; includes string bogs (O)
t	terrace	Long, narrow, level or gently inclined step-like surface, bounded along one edge by a steeper descending slope or scarp and along the other by a steeper ascending slope or scarp; materials are either till, glaciofluvial, fluvial or lacustrine sediments; generally formed by fluvial and glaciofluvial erosion or marine wave action
v	veneer	Any deposit less than 1.5 m thick; morphology of the underlying unit is evident
w	weathered	A thin layer, generally less than 1 m thick, of frost-heaved and frost-shattered bedrock fragments
x	complex	Commonly used to indicate numerous esker ridges that are closely spaced; can be used where any genetic category exhibits numerous surface expressions in a small area, and in which no single element can be defined at this scale



Index Map



SURFICIAL GEOLOGY
POINT LEAMINGTON MAP AREA
(NTS 2E/06)

MAP 2014-17

SYMBOLS

Geological boundary	Drumlin (direction known, unknown)
Scarp face at edge of terrace	Crags and tall hill
Cirque	Till ramp
Esker (flow direction known or assumed, unknown)	Fluting
Melwater channel (small, large)	Roché moutonnée
Crestline of major moraine ridge	Striation (direction known, unknown) (numbers indicate relative age)
Trend of ribbed or minor moraine ridges	Kettle hole (small, large)
Beach ridges	Sinkhole (small, large)
Sand dunes	Observation site
Avalanche track	Delta
		Radiochron age

Note: All symbols and classifications may not occur on this map.

Geology by F.T. Kirby, R.J. Ricketts, D.M. Taylor, and G. Vandervort.
GIS / digital cartography by T.J. Sears.
Digital elevation data supplied by the Shuttle Radar Topography Mission (SRTM), a partnership between NASA and the National Geospatial Intelligence Agency (NGA). Flown aboard the NASA Space Shuttle Endeavour (11-22 February 2000). Additional information available from: <http://ned.usgs.gov/products/elevation/srtm.html>

The age dates and glacial striations, where included, on this map have been obtained from Taylor (2001a, b).
Elevation in feet above mean sea level. Contour interval 50 feet.
Copies of this map may be obtained from the Geoscience Publications and Information Section, Geological Survey, Department of Natural Resources, Government of Newfoundland and Labrador, P.O. Box 8700, St. John's, NL, Canada, A1B 4X6.
This map is subject to review and revision. Comments to the author concerning errors or omissions are invited.
Base from maps published by Surveys and Mapping Branch, Department of Natural Resources, Ottawa, Canada.
Open File 002E/06/1747
This map supercedes Map 1988-159, Open File Newfoundland 1693.

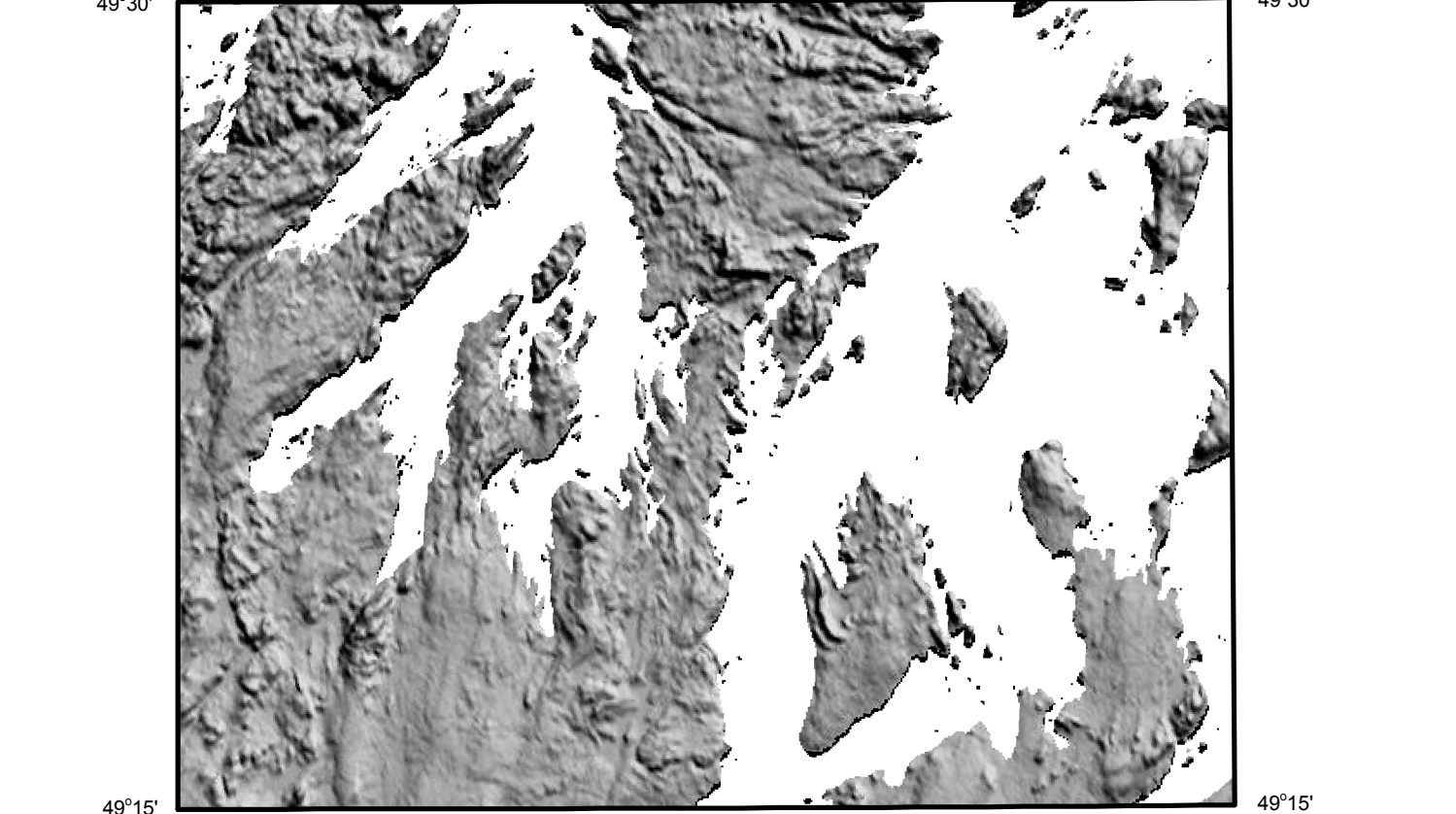
PUBLISHED 2014
Department: <http://www.nr.gov.nl.ca/nr/>
Geological Survey: <http://www.nr.gov.nl.ca/nr/mines/geoscience/>
E-mail: pub@gov.nl.ca

References
Taylor, D.M. (Compiler)
2001a: Carbon-14 date list for Newfoundland and Labrador. Government of Newfoundland and Labrador, Department of Mines and Energy, Geological Survey. <http://gis.geosurvey.gov.nl.ca/>
2001b: Newfoundland and Labrador Stratigraphic Database. Government of Newfoundland and Labrador, Department of Mines and Energy, Geological Survey. <http://gis.geosurvey.gov.nl.ca/>

Recommended citation
Kirby, F.T., Ricketts, R.J., Taylor, D.M. and Vandervort, D.G.
2014: Surficial Geology of the Point Leamington map area (NTS 2E/06). Geological Survey, Department of Natural Resources, Government of Newfoundland and Labrador, Map 2014-17, Open File 002E/06/1747.

Note
Open File reports and maps issued by the Geological Survey Division of the Newfoundland and Labrador Department of Natural Resources are made available for public use without being formally edited or peer reviewed. They are based upon preliminary data and evaluation. The purchaser agrees not to provide a digital reproduction or copy of this product to a third party. Derivative products should acknowledge the source of the data.

Disclaimer
The Geological Survey, a division of the Newfoundland and Labrador Department of Natural Resources (the "authors and publishers"), retains the sole right to the original data and information found in any product produced. The authors and publishers assume no legal liability or responsibility for any alterations, changes or misrepresentations made by third parties with respect to these products or the original data. Furthermore, the Geological Survey assumes no liability with respect to digital reproductions or copies of original products or for derivative products made by third parties. Please consult with the Geological Survey to ensure originality and correctness of data and/or products.



Digital Elevation Model (DEM) from Shuttle Radar Topography Mission (SRTM) data of the Point Leamington map area (shaded from the northeast). The image provides surface information not readily illustrated on the surficial map. Terrain variability is evident, with areas of bedrock highlighted as rougher textured areas (consistent with surficial map), and areas of thicker till shown as smoother textured areas.